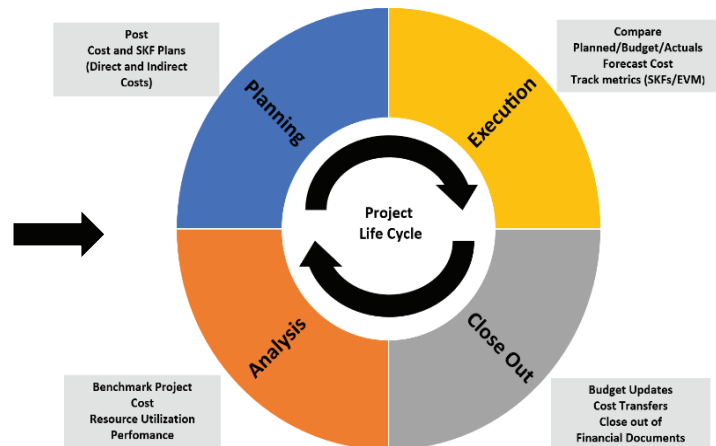
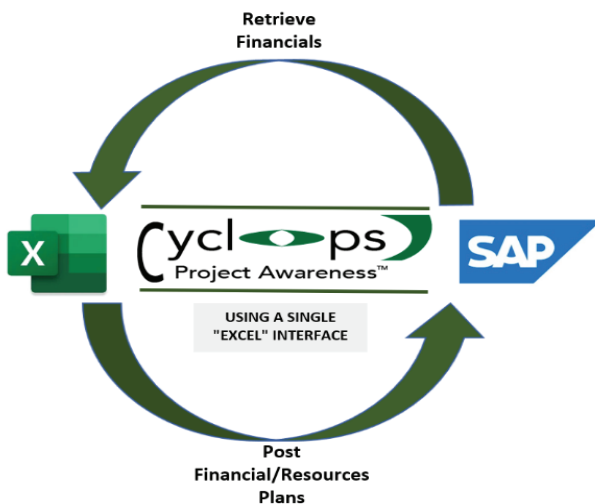


## Real time project data - SAP (R/3, S/4HANA) within the Excel™ environment

Cyclops is an Excel™ application designed specifically for SAP® Project Systems, which provides real-time financial insight into the planning, execution and analysis of capital projects.

From start to finish, all without ever leaving the Excel environment, Cyclops provides a single interface to post planning data to SAP and retrieve financials.

Data is updated instantly in the users excel worksheet with a click of a button, without using SAP commands. Does not require use of copy/paste functions. Once you build your workbook Cyclops does the rest, providing data at your fingertips for efficient cost management and reporting.







## Why Cyclops

Using Excel, the most well-known and widely used tool for data analysis, Cyclops allows you to:

- Visualize planning, financial and budget progress all in one interface.
- Plan and post direct costs, activity inputs (secondary costs), and SKF values to WBS codes in SAP.
- Build a project budget by referencing company and financial indicators data from existing Excel files and update accordingly in real-time.
- Select a WBS or group of WBS and return plan, budget, financial documents, and actuals at any point along the project timeline, and query data by date, materials and other inputs.

## Key Benefits of Cyclops

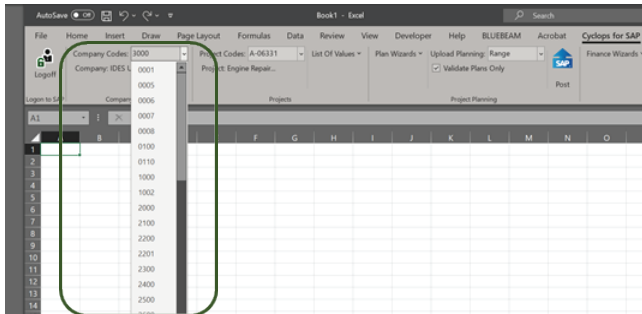
- Visibility**  Compare planned and actual data to be able to make informed decisions during execution.
- Benchmarking**  Improve project systems and maximize resource utilization through benchmarking using customized Excel templates.
- Fastrack Reporting**  Minimize time and resources used in preparation of financial reporting.
- Resource Management and Performance**  Facilitate and fastrack use of Earned Value Management (EVM) systems and SKFs for monitoring of internal and external resources.

# How Does Cyclops Work?

Cyclops has five (5) dropdown menus: company codes, project codes, list of values, plan wizard and finance wizard. These menus allow you to link company codes with projects, post planning data to SAP, and then retrieve financials during project execution.

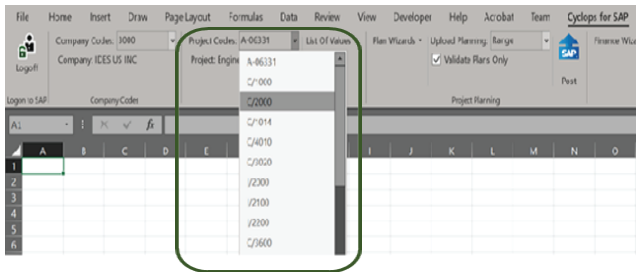
## 1. Company Codes:

Allows you to select a company code or controlling area as your top-level workspace to then link it to a specific project to post a plan or retrieve data from SAP.



## 2. Project Codes:

Displays a list of all projects linked to the selected company code and where the user has permission to view financial information.

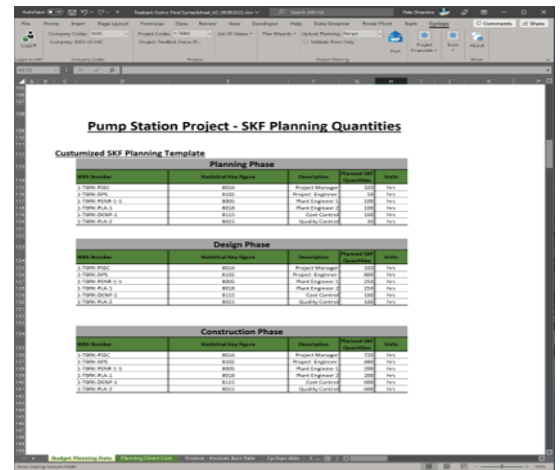
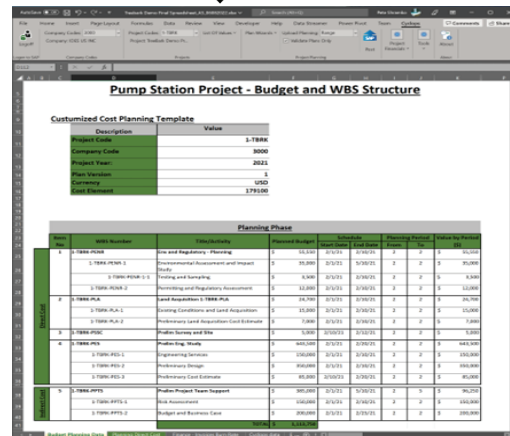
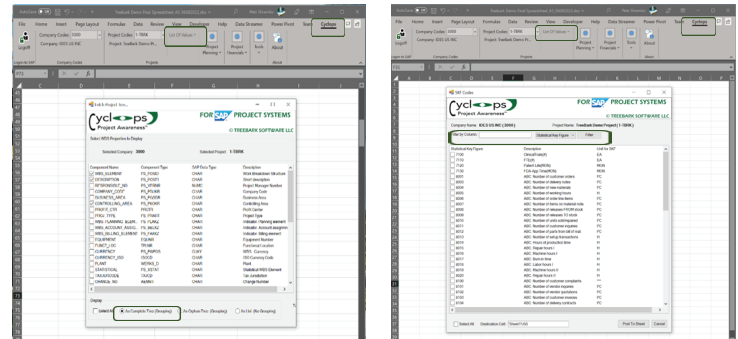
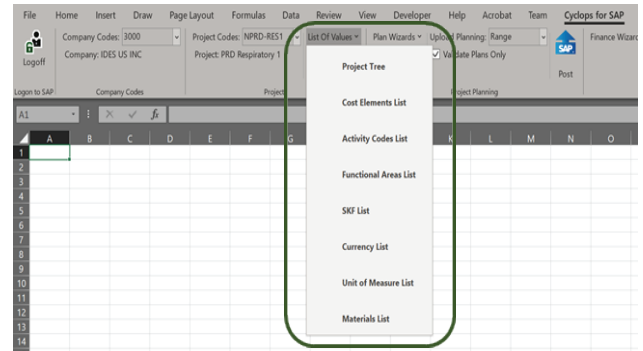


## 3. List of Values:

Provides a preformatted list of SAP values associated with the selected company or controlling area that can be used as reference cells to build:

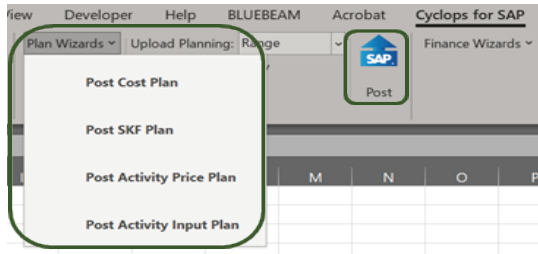
- The financial plan model to be loaded in SAP, and multiple versions of the plan.
- Customized templates for data analysis and project reporting

This function eliminates the need of multiple interfaces, the use of multiple excel files, and separate data downloads from SAP.



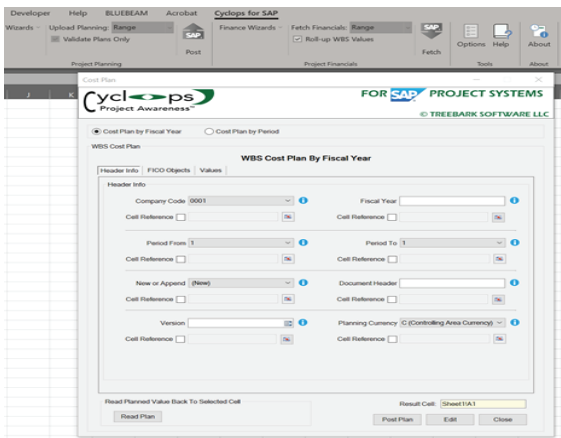
#### 4. Plan Wizard:

A powerful feature that allows you to build the financial project plan in excel (and multiple versions of the plan). With the easy use of the dropdown menu and interface shown below to enter/or reference the list of values retrieved by cyclops from SAP mentioned above, and any company or project financial data already available in excel. All with a click of a button to post real-time on SAP.



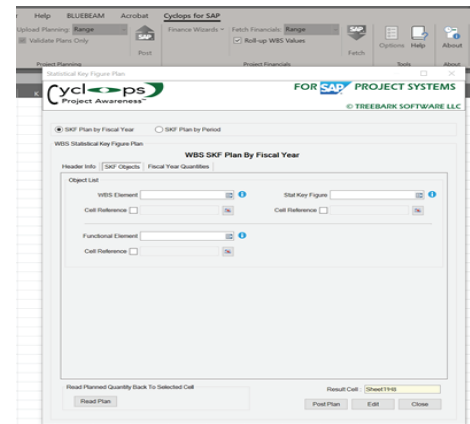
#### Post Cost Plan:

Post the primary cost plan by fiscal year and period.



#### Post SKF Plan:

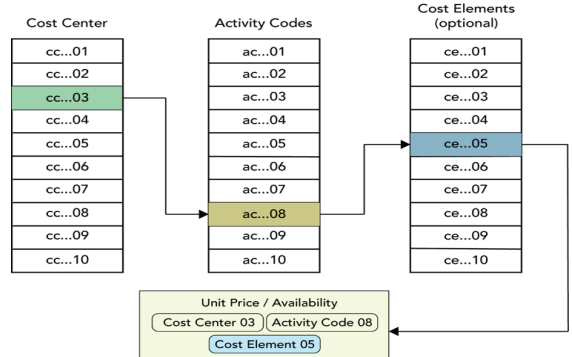
Post an SKF plan for allocation of internal assets, resources, and costs sharing.



#### Post Activity Price Plan:

Assign a unit value or price to internal resources that can then be used in secondary planning and costs sharing.

Activity Price Planning Tables / Process



### Develop Template

### Post Data

### Data review and analysis

**Post Activity Input Plan:**

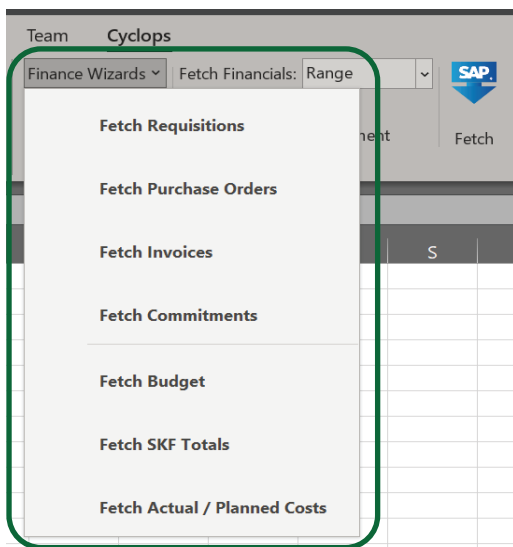
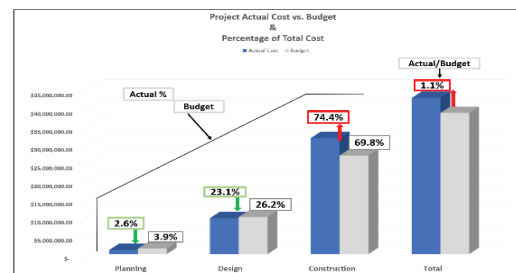
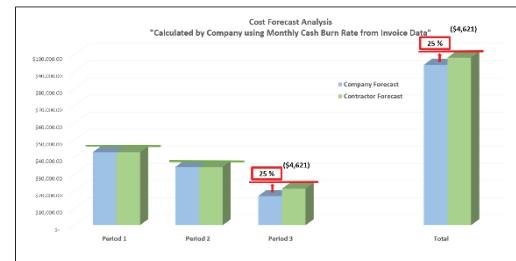
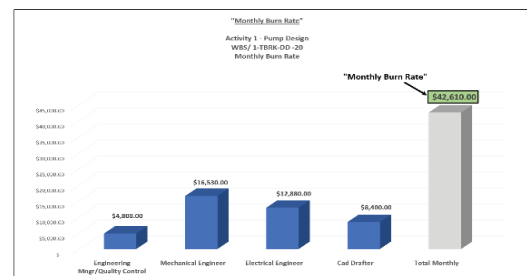
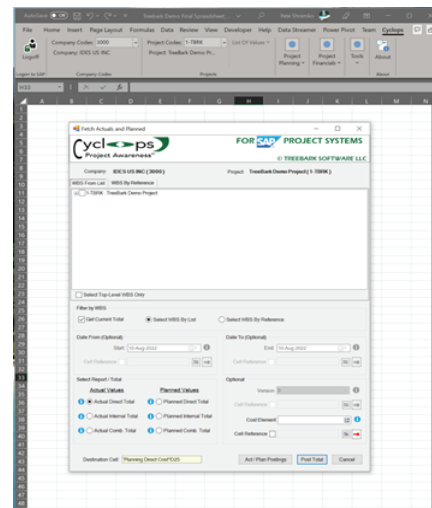
Allows you to do secondary planning with internal resources after value or prices have been assigned via activity price plan. The activity plan can later be used to compare planned versus actuals during project execution for secondary planning.

**5. Financial Wizard:**

Allows you to view, compare, and report real-time data (planned vs. actuals) during project execution by retrieving the data highlighted in the single interface below.

Also, with a simple click of a button and by doing it all in excel it allows you to:

- a. Set up templates to produce immediate reports that can be presented at any level within your organization
- b. Compare data with third party Excel reports (i.e. construction reports, etc.)
- c. Benchmark projects by comparing project data with company or industry data



Using the cyclops interface and excel features tables and visuals for data analysis and reports can be crated for tasks, activities, project phases, working disciplines, and others based on the WBS structure for the project.

Please click the link below for videos and demos:

**For more information:**

- [www.treebarksoftware.com](http://www.treebarksoftware.com)
- (786) 731-9433
- [sales@treebarksoftware.com](mailto:sales@treebarksoftware.com)